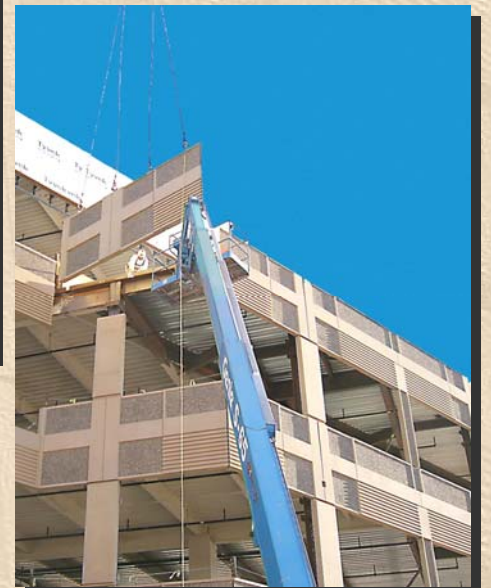


OCOTILLO CORPORATE CENTER

Chandler, Arizona



- Architectural precast concrete provided the accenting shapes, colors and textures for this unique, one of a kind, office building.
- By incorporating a combination of exposed aggregate finish, sandblast finish and a cast-in rib pattern, the Architect designed the precast to compliment the window system and not compete with it.
- This project consists of 624 precast panels for a total of 45,000 SF.



Architect: DLR Group
Engineer: DLR Group
General Contractor: The Weitz Company

**CORESLAB
STRUCTURES (ARIZ) INC.**

(602) 237-3875 • Fax: (602) 237-3459

E-mail: salesarizona@coreslab.com • Visit us at: www.coreslab.com